



Evason Phuket & Six Senses Spa Eco Story

Water Conservation

Evason Phuket, March 2007: The shortage of fresh water is one of the biggest problems to face the world today. Severe water shortages affect 400 million people every day and 1.1 billion people do not have access to safe drinking water. These numbers are likely to increase dramatically.

Despite a lot of annual rainfall, Phuket Island experiences water shortages as most of the water is in private hands and not in the governmental distribution system. The high demand from tourism puts a serious strain on the resource, particularly during the dry season. Furthermore, waste water is a concern in that it may cause pollution, particularly to the fragile marine life. Much of the sewage on the island goes straight in the ocean without any form of treatment.



Iron Palm is a sign mean 'Do not change my bed sheet'



Evason Phuket & Six Senses Spa takes several measures to tackle these challenges. The resort has achieved 6% better than Green Globe 21 Best Practice Level for Water Consumption, which is a benchmarking standard comparing resorts worldwide. This ensures that guests enjoying a luxurious holiday at Evason Phuket & Six Senses Spa can do so with a minimal impact on local water supply.

In fact, the resort has gone further than just reducing consumption as it acquired a separate piece of land opposite the Phuket Seashell Museum, which has been turned into a reservoir. Rainwater is collected making the resort self-sufficient with water all year round. The water is treated to make it suitable for showering and some water is further treated through reverse osmosis. This water contains added minerals and is used as complimentary water for guests. A small desalination plant on Bon Island, the resorts private island, also ensures that fresh water can be enjoyed there.



On-site wastewater Treatment Plant

As the resort is self-sufficient with water, no strain is put on the government water supply. However, it is still important to conserve water. All shower heads and taps are 'water saving' and the toilets have low flush systems. There is even one urinal that is waterless - using biodegradable oil to stop smells. For heart-of-house areas "push" valves are used to ensure no taps are running unnecessarily.

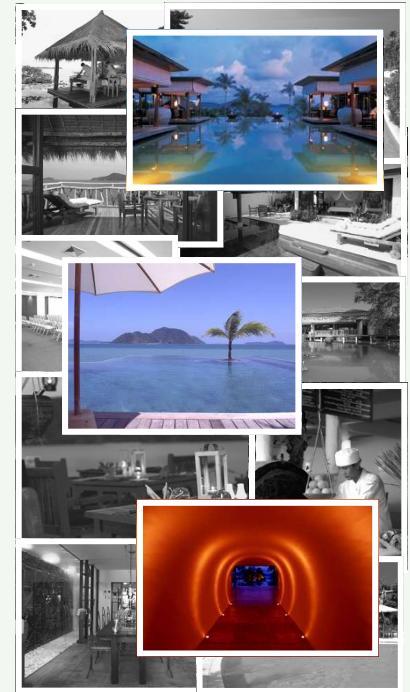
All waste water is collected in the resort's waste water treatment system which treats the water utilizing a gravel filtration aerobic system. A separate waste water treatment plant is used for laundry as there are high concentrations of cleaning chemicals.

The grey water is then pumped into a small artificial lake, which creates a great habitat for migratory birds, and is further treated by hyacinths before being used for garden irrigation. Thus the resort has zero discharge into the ocean.

All of the measures taken by Evason Phuket & Six Senses Spa ensure guests can enjoy their stay knowing that there has been no additional strain placed on the fresh water supply during their stay. However, to further reduce water consumption help is needed from guests through remembering to avoid taps from running, turning off showers whilst putting

Contact Details

Property name: Evason Phuket & Six Senses Spa
Location: Phuket Thailand
Phone number: +66 76 381 010 (up to 7)
Fax number: +66 76 381 018
Contact Person: Environment Coordinator
Email: environment-phuket@evasonresorts.com
Web site: www.sixsenses.com/evason-phuket



EVASON PHUKET

& SIX SENSES SPA

Prepared by Arnfinn Oines
January 2008



2006 Responsible Tourism



2007 Responsible Tourism Award

