



Evason Phuket & Six Senses Spa Eco Story

Waste Management at Evason Phuket

With more and more items being non-biodegradable and the world's population living closer and closer together - 50% live in cities - waste has become a serious environmental issue. Particularly in Asian countries such as Thailand, waste is often poorly managed with little government support to recycle. Phuket is no exception and without any landfill or governmental driven recycling scheme the island relies on burning waste in incinerators and private recycling initiatives.

Evason Phuket & Six Senses Spa has put in place several actions to minimize waste contribution. The resort has achieved 41% better than Green Globe 21 Best Practice Level for Waste Sent to Landfill and Waste Recycling, which is a benchmarking standard comparing resorts worldwide.

The three R's, *Reduce - Reuse - Recycle*, are followed. The most important when it comes to waste management is often the area most overlooked - reduce. We must make every effort to reduce waste in the first place, in particular non-biodegradable products such as plastic. This is the reason you will see that most products and items at the resort are biodegradable or natural. Natural rubbish bags are used and suppliers are asked to reduce packaging and deliver in bulk. In the guest rooms amenities there are refillable ceramic containers and recycled paper is used for wrapping.

Finding other ways to reuse products is also important. For example in the offices, reusing the reverse side of printed paper is practiced. Recycled wood is used throughout the property and driftwood is used for decoration. In room torches are equipped with rechargeable batteries to reduce toxic waste and engine oil is reused to treat wood.

However, no matter how much is reduced and reused waste is a fact of life. For this reason, a Recycling Corner has been established where waste is separated for recycling, such as paper and cardboard, plastics, metal, ceramic and cooking oil. A composting facility has also been established to handle organic kitchen and garden waste. As an end result, rich



Garbage bag made from potato sac

soil is created, which again is reused for the Herb & Vegetable Garden and nursery. Parts of the garden waste is shredded with the resort's chipping machine, and put directly back in the garden and around footpaths as mulch. It serves as great nutrition for the plants and reduces weed growth.

Water consumption is quite a concern on Phuket Island despite a lot of annual rainfall, as most of the water is in private hands and not in the governmental distribution system. Furthermore, waste water is a concern in that it may cause pollution particularly to the marine life.

At Evason Phuket we are taking several measures to tackle these challenges.

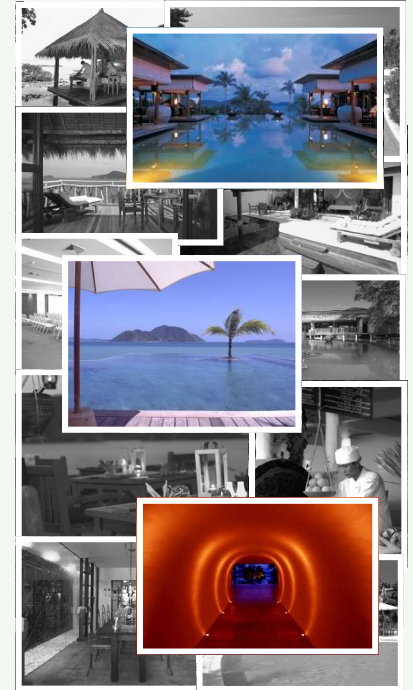
- Self-sufficient water supply through own reservoir
- Production of own drinking water
- Waste water treatment plant
- Grey water used for garden irrigation - zero discharge
- Water saving "push" valves, shower heads and dual flush toilet systems



Drift wood brought from the sea

Contact Details

Property name: Evason Phuket & Six Senses Spa
Location: Phuket Thailand
Phone number: +66 76 381 010 (up to 7)
Fax number: +66 76 381 018
Contact Person: Environment Coordinator
Email: environment-phuket@evasonresorts.com
Web site: www.sixsenses.com/evason-phuket



EVASON PHUKET

& SIX SENSES SPA

Prepared by Arnfinn Oines
January 2008



2006 Responsible Tourism



AWARD
www.wildasia.net

2007 Responsible Tourism Award



Finalist
www.wildasia.net

